



Chatsworth Road, London, W4 3HY

Guide Price £1,400,000

WHITMAN & CO.

SALES · LETTINGS · COMMERCIAL

- semi-detached family home
- 30' Through Reception Room
- Garage and off-street parking

- Substantial plot with a huge garden
- Potential to remodel and extend STPP
- No onward chain

Tenure - Freehold
Local Authority - Hounslow
Council Tax - Band G

THE PROPERTY

An unmodernised four-bedroom semi-detached house situated on this exceptionally large plot, offering immense scope and ideally located on this prestigious residential road.

The property features four bedrooms, a large loft, a bathroom, a spacious entrance hall, a 30' through reception room, a 19' kitchen/breakfast room, a cloakroom, a 175' x 41' garden, a garage, and off-street parking.

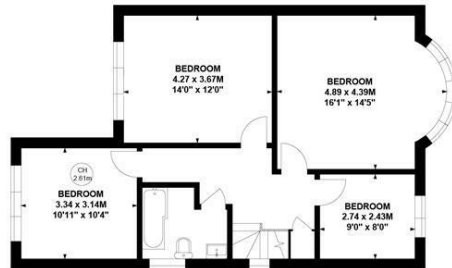
Situated within close proximity to Chiswick House and Grounds, Chiswick mainline Station, numerous bus routes, the A4/M4 for routes in and out of London and a variety of local shops, bars and restaurants. No onward chain.

Chatsworth Road, W4

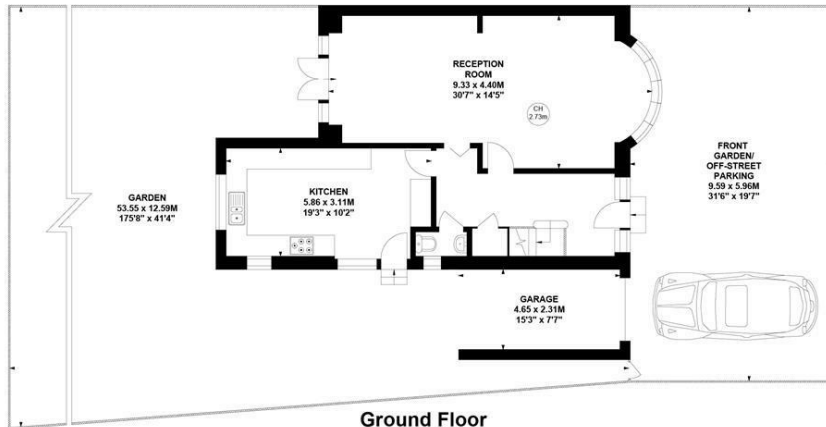
Approximate gross internal area
151.82 sq m / 1634 sq ft
(Including Garage)

Garage : 10.74 sq m / 116 sq ft

Key :
CH - Ceiling Height



First Floor



Ground Floor

Not to scale, for guidance only and must not be relied upon as a statement of fact.

All measurements and areas are approximate only

SITUATION



5-7 Turnham Green Terrace, Chiswick, London, W4 1RG

Tel 020 8747 8800

E-mail sales@whitmanandco.com

Website www.whitmanandco.com



MISREPRESENTATION ACT 1967

Whitman & Co. for themselves and for the vendors give notice that these particulars do not constitute any part of, an offer of contract. All statements contained in these particulars are made without responsibility on the part of Whitman & Co. or the vendor. None of the statements contained in these particulars is to be relied upon as statements or representations of facts. Any intending purchaser must satisfy himself by inspection or otherwise as to the correctness of each of the statements contained in these particulars. The vendor does not make or give, and neither Whitman & Co. or any person in their employment has any authority to make or give, any representation or warranty whatever in relation to the property.